

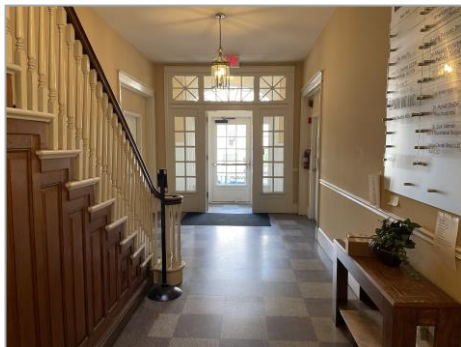
1426 21st Street, NW #407 Washington, DC 20036



Built In: 1908 **Building:** Hartnett **Neighborhood:** Dupont **Condo/Coop Fee:** \$288.38/month*

(*Includes common area & exterior building maintenance, insurance, management, reserve funds, sewer, snow removal, trash, water)

**** PERFECT INVESTMENT OR PIED-A-TERRE! NO RENTAL OR PET RESTRICTIONS! **** The John Burgess Group of Realty Executives Premier is proud to present this light and bright studio condo located at the corner of 21st and P Streets in the Dupont neighborhood. This unit has been freshly painted and features wood floors, oversized windows providing an abundance of natural light, ample closet space, sparkling kitchen with white cabinets, white appliances (full-sized refrigerator, electric stove/oven, countertop microwave and dishwasher) and pass-through to dining and living areas. The full bath has been updated with ceramic tile and includes a tub with shower. The Hartnett is a three-story, pet-friendly, Victorian style building built in 1908 and renovated in 2000. Entry to the building is through FOB access and a call box and buzzer system. There is a laundry room on the floor for residents to use. Located close to Dupont Metro station, museums, shopping, restaurants and downtown, as well as Rock Creek Park, this home has it all! Visit www.JohnBurgessRealtor.com for a Visual Tour and Property Disclosures. Listed at \$229,900



John Burgess Group – 301.681.5093

Info@JohnBurgessRealtor.com – www.JohnBurgessRealtor.com



3919 National Drive, Suite 310
Burtonsville, MD 20866
301-476-7700

Each Office Independently Owned and Operated.

If you have a brokerage relationship with another agency, this is not intended as a solicitation.

All information deemed reliable but not guaranteed

